

ADAPTIVE

OUTDOOR PRODUCTS SELECTION GUIDE



PROVIDING A NEW LEVEL OF
VISUAL DISPLAY SOLUTIONS
FOR THE COMMERCIAL MARKET

AlphaEclipse Time/Temp



AlphaEclipse Time/Temp



AlphaEclipse Time/Temp

- Large, 18-inch characters
- Visible from 900 feet, 90° viewability
- Replaces costly incandescents
- Energy efficient: Uses up to 1/40 the power of incandescents

- No maintenance or lamp replacements
- Available in red or amber
- Simple 4-button control
- Tamper-resistant enclosure
- 11" version available (see 3500 series 8x32)

Approximate Case Dimensions:
Approximate Weight:
Display Dimensions:

Time/Temp	
	60"L x 6.8"D x 28"H
	125 lbs (56.7 kg)
	48.8"L x 17.3"H

Segmented Character:	8.3" Wide x 17.3" High
Stroke Width:	1.1"
Pixel (LED) Color:	Red or amber monochrome
Pixel Wavelength:	Red = 626 nm Amber = 590 nm
Angle Viewing:	±35° (70° cone) to 50% of straight-on brightness
Display Options:	-Time only (12 hour format) -Time and Temperature (Celsius and/or Fahrenheit) -Can be set to hold from 1-8 seconds
Battery:	Time retention during power outages of up to 30 days
Enclosure:	Fully front-serviceable
Temperature Accuracy:	±1°C Typical
Case:	All aluminum cabinet Tamper-proof

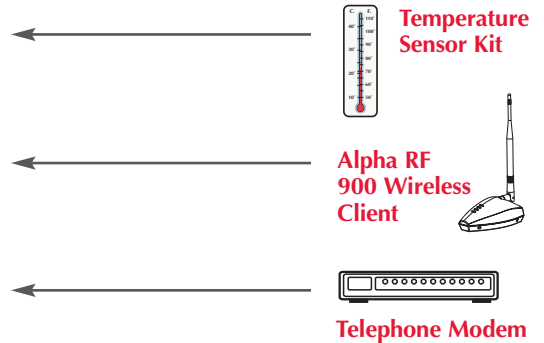
Special Features:	-External temperature probe -Internal AC power switch for servicing -Internal thermostatically controlled fans for cooling and heating -Automatic overheating protection -Buttons for setting time can be remotely mounted -Auto dimming for nighttime -Supports synchronization of multiple units (i.e. back-to-back)
Power:	120 VAC ± 10% - 60 Hz (240 VAC model also available)
Limited Warranty:	Two-year factory depot parts warranty
Agency Approvals:	FCC Part 15, Class A ANSI/UL 1950: 3rd Edition, 1997 CAN/CSA C22.2 950-95 C-ETL-US listing mark
Operating Temperature:	-40° to 122°F (cold start) / -40° to 50°C
Mounting:	Steel mounting brackets



PC Networking



AlphaEclipse 2601 192 x 32

Optional Network Accessories



- 
RS232
 • 50ft. wired maximum distance
- 
RS232/485 Converter Kit
 • 4000ft. wired

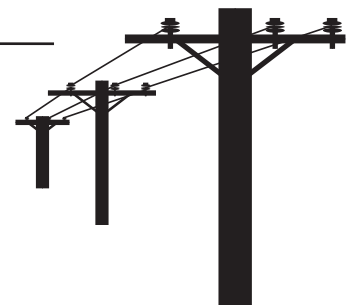


Fiber Optic Modem
• 10,000ft. wired

Ethernet Box/Adapter



Alpha RF 900 Wireless Server



FLEXIBLE CONTROL:

- Wired or wireless options to meet any network requirement
- Complete control from the convenience of your PC
- Daily or calendar scheduling of messages and graphics
- The AlphaNet CBT automatically guides you through an easy learn-as-you-go training process

OUTDOOR ADVERTISING BENEFITS:

- Increase sales of advertised products and services by 15% to 50%
- Lowest CPM ad exposure than any other medium (TV, radio, newspaper, etc.)
- Fast ROI, pay for your display investment in a matter of months
- Instant impact on your daily drive-by audience

PC running
Windows® 95/98/
NT 4.X/ME/
2000/XP

User provided PC with internal telephone modem

AlphaEclipse 2500 Series - .45"(11mm) Pitch



AlphaEclipse 2500 series 160 x 64 pixels



AlphaEclipse 2500 series 128 x 48 pixels



AlphaEclipse 2500 series 192 x 32 pixels

- Visibility from 7 to over 700 feet, 90° viewability
- Over 20 standard sizes available
- Industry leader in delivery time
- Simple messaging via PC
- Thin aluminum case, only 8.5" deep

- Agency approval ANSI/UL, C-ETL-US
- ADA-compliant characters
- Energy efficient
- Long life LEDs: 100,000 hours
- Display up-to-the-minute specials, targeting drive-by traffic

Rows	Columns	Case H x W	Char. Height Per Line	3" Char's Per line	*Max Current (Amps)	Weight
16	96	13" x 49"	7.2"/1	16/2	2	60 lbs.
16	128	13" x 64"	3"/2	21/2	3	80 lbs.
16	160	13" x 78"	2.25"/2	26/2	3.5	100 lbs.
16	192	13" x 92"		32/2	4	120 lbs.
32	96	20" x 49"	14.4"/1	16/4	4	90 lbs.
32	128	20" x 64"	9"/1	21/4	5.5	110 lbs.
32	160	20" x 78"	7"/2	26/4	7	130 lbs.
32	192	20" x 92"	4.5"/3	32/4	8	150 lbs.
48	96	27.5" x 49"	3"/4	16/6	6	105 lbs.
48	128	27.5" x 64"	2.25"/5	21/6	8	125 lbs.
48	160	27.5" x 78"	14.4"/1	26/6	10	145 lbs.
48	192	27.5" x 92"	9"/2	32/6	12	165 lbs.
			7"/3			
			4.5"/4			
			3"/6			
			2.25"/8			

Rows	Columns	Case H x W	Char. Height Per Line	3" Char's Per line	*Max Current (Amps)	Weight
64	96	34.5" x 49"	14.4"/1	16/8	8	150 lbs.
64	128	34.5" x 64"	9"/3	21/8	11	170 lbs.
64	160	34.5" x 78"	7"/4	26/8	13.5	190 lbs.
64	192	34.5" x 92"	4.5"/5	32/8	16	210 lbs.
80	96	41.5" x 49"	3"/8	16/10	10	180 lbs.
80	128	41.5" x 64"	2.25"/10	21/10	13.5	200 lbs.
80	160	41.5" x 78"	14.4"/2	26/10	17	220 lbs.
80	192	41.5" x 92"	9"/3	32/10	20	240 lbs.
			7"/5			
			4.5"/7			
			3"/10			
			2.25"/13			

Approximate weight & dimensions – call distributor for architectural drawings. Due to continuing product innovations, all specifications are subject to change without notice.

Specifications common to all Eclipse EMC displays (Except Time/Temp)

- Pixel (LED) color:** Red or amber (3600 RGB)
Pixel Luminance: Viewable in direct sunlight
Pixel Wavelength: Red-626nm Amber-592nm
Character Set: International character set, block (sans serif), decorative (serif), upper/lower case, slim, wide, double wide
Message Capacity: 81 different messages can be stored and scheduled to be displayed according to time and date
Message Presentation: –Minimum of 25 unique presentation styles

Color Control:

- Automatic centering in any mode
- User programmable logos and graphics
- Programmable hold times up to 6 minutes
- Calendar scheduling
- Shading, 32 options for backgrounds and shadow character control for 2500/2600/3500 series
- 256 shades for 3600 red/amber series models
- 16.7 million colors for 3600 RGB series models

AlphaEclipse 2600 Series - .6"(15mm) Pitch



AlphaEclipse 2600 series 192 x 32 pixels



AlphaEclipse 2600 series 192 x 32 pixels



AlphaEclipse 2600 series 160 x 48 pixels



AlphaEclipse 2600 series 128 x 32 pixels

- Visibility from 10 to over 1000 feet
- Over 20 standard sizes available
- Thin aluminum case only 8.5" deep
- 90° or 125° viewability models
- Agency approval ANSI/UL, C-ETL-US

- Designed to replace 4", 6" and 8" letterboards
- Designed to replace static letterboards with active electronic displays
- Replaces static letterboards and eliminates cost of manual labor that is also associated with safety and liability concerns

Rows	Columns	Case HxW	Char. Height Per Line	4" Char's Per line	*Max Current (Amps)	Weight
16	96	15.5" x 64"	9.6"/1	16/2	2	96 lbs.
16	128	15.5" x 83"	6"/1	21/2	3	127 lbs.
16	160	15.5" x 102"	4"/2	26/2	3.5	160 lbs.
16	192	15.5" x 121"	3"/2	32/2	4	193 lbs.
32	96	25" x 64"	19.2"/1	16/4	4	119 lbs.
32	128	25" x 83"	12"/1	21/4	5.5	144 lbs.
32	160	25" x 102"	9"/2	26/4	7	171 lbs.
32	192	25" x 121"	6"/3	32/4	8	198 lbs.
48	96	35" x 64"	4"/4	16/6	6	139 lbs.
48	128	35" x 83"	19.2"/2	21/6	8	163 lbs.
48	160	35" x 102"	12"/2	26/6	10	191 lbs.
48	192	35" x 121"	9"/3	32/6	12	218 lbs.

Rows	Columns	Case HxW	Char Height Per line	4" Char's Per line	*Max Current (Amps)	Weight
64	96	44" x 64"	19.2"/1	16/8	8	198 lbs.
64	128	44" x 83"	12"/3	21/8	11	222 lbs.
64	160	44" x 102"	9"/4	26/8	13.5	250 lbs.
64	192	44" x 121"	6"/5	32/8	16	277 lbs.
80	96	54" x 64"	4"/8	16/10	10	237 lbs.
80	128	54" x 83"	3"/10	21/10	13.5	261 lbs.
80	160	54" x 102"	19.2"/2	26/10	17	289 lbs.
80	192	54" x 121"	12"/3	32/10	20	316 lbs.

Approximate weight & dimensions – call distributor for architectural drawings. Due to continuing product innovations, all specifications are subject to change without notice.

- User Animations:** .BMP and .GIF file formats
- Temperature Accuracy:** ±2° F Typical (with optional temperature probe)
- Clock/Date:** Date in multiple formats and time in 12/24-hour formats
- Battery:** Lithium battery for message and time/date retention during power interruptions for at least 1 year
- Serial Communication:** Standard RS232 and RS485
- Interface:** Options: On site wireless, modem, or fiberoptic. Factory tested, configured and installed inside case

- RAM Capacity:** 1 MEG – 2500/2600/3500 series
- Special Features:**
- External temperature probe (optional)
 - Internal AC power switch for servicing
 - Internal thermostatically controlled fans for cooling
 - Serially uploadable FLASH EPROM memory for upgrading firmware
- Communications:** Alpha® Communication Protocol
- Power:** 120 VAC ± 10% - 60 Hz (240 VAC model also available)

AlphaEclipse 3500 Series - 1.38"(35mm) Pitch



AlphaEclipse 3500 series 112 x 24 pixels



AlphaEclipse 3500 series 80 x 8 pixels



AlphaEclipse 3500 series 144 x 24 pixels

- Visibility from 200 to over 2000 feet
- Over 20 standard sizes available
- 90° or 125° viewability models
- Thin aluminum case only 8.5" deep
- Agency approval ANSI/UL, C-ETL-US

- Designed for highspeed highway vehicle viewing
- Low-power, long life LEDs
- Solid-state, low maintenance design
- Replace old incandescent & flipdisk technology
- Industry leader in delivery time

Rows	Columns	Case HxW	Char. Height Per Line	10" Char's Per line	*Max Current (Amps)	Weight
8	32**	1'7" x 4'6"	11"/1	5/1	1.5	90 lbs.
8	64	1'7" x 8'2"		10/1	2.5	140 lbs.
8	80	1'7" x 10'		13/1	2.9	160 lbs.
8	96	1'7" x 11'10"		16/1	3.3	190 lbs.
8	112	1'7" x 13'8"		18/1	3.8	220 lbs.
8	128	1'7" x 15'6"		21/1	4.2	240 lbs.
8	144	1'7" x 17'4"		24/1	4.6	260 lbs.
16	64	2'6" x 8'2"		22"/1 10"/2	10/2	4.3
16	80	2'6" x 10'	13/2		5.4	220 lbs.
16	96	2'6" x 11'10"	16/2		6.2	250 lbs.
16	112	2'6" x 13'8"	18/2		7.2	285 lbs.
16	128	2'6" x 15'6"	21/2		8.0	320 lbs.
16	144	2'6" x 17'4"	24/2		8.7	355 lbs.

Rows	Columns	Case HxW	Char. Height Per line	10" Char's Per line	*Max Current (Amps)	Weight
24	64	3'5" x 8'3"	33"/1 14"/2 10"/3 7"/4 44"/1 21"/2 14"/3 10"/4 7"/5	10/3	6.5	440 lbs.
24	80	3'5" x 10'1"		13/3	7.6	465 lbs.
24	96	3'5" x 11'11"		16/3	8.7	485 lbs.
24	112	3'5" x 13'9"		18/3	10.6	515 lbs.
24	128	3'5" x 15'7"		21/3	11.8	535 lbs.
24	144	3'5" x 17'5"		24/3	13.7	575 lbs.
32	64	4'4" x 8'3"		10/4	8.3	480 lbs.
32	80	4'4" x 10'1"		13/4	10.1	505 lbs.
32	96	4'4" x 11'11"	16/4	11.6	535 lbs.	
32	112	4'4" x 13'9"	18/4	14.0	560 lbs.	
32	128	4'4" x 15'7"	21/4	15.6	590 lbs.	
32	144	4'4" x 17'5"	24/4	18.2	635 lbs.	

Approximate dimensions – call distributor for architectural drawings.
Due to continuing product innovations, all specifications are subject to change without notice.

Case Material: NEMA type 3R, aluminum cabinet
Limited Warranty: Two-year limited factory depot parts warranty
Agency Approvals: FCC Part 15, Class A
 ANSI/UL 60950: 3rd Edition, 2000
 CAN/CSA C22.2 60950-00, 3rd Edition 2000
 C-ETL-US listing mark
Operation Temp: -40° to 122°F / -40° to 50°C
Mounting: Single and double pole, wall and monument

Enclosure: Fully front-serviceable aluminum, steel mounting brackets
Energy Efficient: Energy Smart Display Technology consumes up to less than 1/40 the power of incandescents
Software: AlphaNet software included with self tutorial/video, computer based training program

* Max current (AMPS) Typical draw is 50%
 ** 3500 8x32 is ideal for use as an 11-inch time and temperature display, including all the features of a message center

AlphaEclipse 3600 Series - 1.38"(35mm) Pitch



AlphaEclipse 3600 series 144 x 32 pixels



AlphaEclipse 3600 series 240 x 80 pixels



AlphaEclipse 3600 series 48 x 48 pixels



AlphaEclipse 3600 series 240 x 16 pixels

- PureColor red, amber or full color (16.7 million colors)
- 2 ft. x 4 ft. up to 15 ft. x 30 ft. displays
- Visible from 200 to over 2000 ft., 125° viewability
- All modular construction enables efficient servicing
- Top-of-the-line outdoor LED series
- Environmentally sealed, silicone potted LED design with front-serviceable components
- Designed for mainstreet or highway vehicle viewing
- Exposed pixel design improves brightness and readability
- Agency approval – ANSI/UL, C-ETL-US

Rows	Columns	*Case HxW	Char. Height Per Line	10" Char's Per line	*Max Current (Amps) R/A	RGB	Weight with mounting sub-structure
16	32	22" x 51"	22"/1 line 10"/2 line	5/2	3.54	5.54	110 lbs.
16	48	22" x 73"		8/2	5.31	8.31	165 lbs.
16	64	22" x 95"		10/2	7.08	11.08	220 lbs.
16	80	22" x 117"		13/2	8.85	13.85	275 lbs.
16	96	22" x 139"		16/2	10.62	16.62	330 lbs.
16	112	22" x 161"		19/2	11.39	19.39	385 lbs.
16	128	22" x 183"		21/2	14.16	22.16	445 lbs.
16	144	22" x 205"		24/2	15.93	24.93	495 lbs.
32	32	44" x 51"	44"/1 line 21"/2 line 14"/3 line 10"/4 line 7"/5 line	5/4	7.08	11.08	220 lbs.
32	48	44" x 73"		8/4	10.62	16.62	330 lbs.
32	64	44" x 95"		10/4	14.16	22.16	440 lbs.
32	80	44" x 117"		13/4	17.7	27.7	550 lbs.
32	96	44" x 139"		16/4	21.24	33.24	660 lbs.
32	112	44" x 161"		19/4	24.78	38.78	770 lbs.
32	128	44" x 183"		21/4	28.32	44.32	880 lbs.
32	144	44" x 205"		24/4	31.86	49.86	990 lbs.

Rows	Columns	*Case HxW	Char. Height Per Line	10" Char's Per line	*Max Current (Amps) R/A	RGB	Weight with mounting sub-structure
48	48	66" x 73"	44"/1 line 27"/2 line 21"/3 line 14"/4 line 10"/6 line 7"/8 line	8/6	15.93	24.93	495 lbs.
48	64	66" x 95"		10/6	21.24	33.24	660 lbs.
48	80	66" x 117"		13/6	26.55	41.55	825 lbs.
48	96	66" x 139"		16/6	31.86	49.86	990 lbs.
48	112	66" x 161"		19/6	37.17	58.17	1155 lbs.
48	128	66" x 183"		21/6	42.48	66.48	1320 lbs.
48	144	66" x 205"		24/6	47.79	74.79	1485 lbs.
64	64	88" x 95"		44"/1 line	10/8	28.22	44.32
64	80	88" x 117"	27"/2 line	13/8	35.4	55.4	1100 lbs.
64	96	88" x 139"	21"/3 line	16/8	42.48	66.48	1320 lbs.
64	112	88" x 161"	14"/5 line	19/8	49.56	77.56	1540 lbs.
64	128	88" x 183"	10"/8 line	21/8	56.64	88.64	1760 lbs.
64	144	88" x 205"	7"/10 line	24/8	63.72	99.72	1980 lbs.

*Additional sizes up to 128 rows x 256 columns (15ft. x 30ft.) are available. Approximate dimensions and weights – call distributor for architectural drawings. Due to continuing product innovations, all specifications are subject to change without notice.

3600 Series Unique Features:

- Memory:** 4MB RAM 32MB compact flash
- Shading:** 256 shades of red/amber
- Color:** RGB 16.7 million
- Louvers:** Improves visibility and contrast ratio

- PureColor™ Design:** Exposed LED pixels eliminate screen glare/reflections, improve visibility and LED brightness
- Modular Flexibility:** 22" Square modules may be interconnected to meet any size requirement with a short lead-time. 12" Deep with steel mounting brackets.



Small sign manufacturing area



Large sign manufacturing area

Headquarters – Milwaukee, Wisconsin USA

Adaptive's 71,000 square foot corporate headquarters is also home to:

- Engineering Research and Development Team
- Our Software Development Team
- North American Sales and Marketing Teams
- Corporate Quality Control

- Corporate Operations and Purchasing
- Corporate Accounting
- North American Manufacturing
- Customer Support Team
- Applications and Technical Support



European Operation – Grenoble, France

Adaptive's 15,000 square foot European headquarters is home to:

- European Sales and Marketing Teams,
- Engineering Development Team
- Manufacturing
- Customer Support
- Applications and Technical Support



Malaysian Operation – Alor Setar, Malaysia

Adaptive's 60,000 square foot Far East headquarters is home to:

- State-of-the-art electronic assembly lines
- State-of-the-art Chip on Board (COB) lines
- Far East purchasing
- Manufacturing Engineering
- Far East Quality Control

ADAPTIVE MICRO SYSTEMS LLC – Founded in 1978, Adaptive Micro Systems is the leading supplier of indoor and outdoor programmable LED electronic display systems. The "ALPHA" brand is the defacto industry standard for multiple indoor applications as diverse as state lotteries to manufacturing automation. Adaptive's Eclipse™ brand is fast becoming the popular choice for any outdoor dynamic display need from commercial messaging to integrated transportation information systems. Adaptive leverages its US, Malaysia and Europe manufacturing, sales and service capabilities to provide high value solutions and world-class customer support.

PEOPLE – Adaptive's team is focused on providing quality display solutions and improving opportunities for our business partners. Adaptive's people are well known for going the extra mile to insure our customers' expectations are met or exceeded every day. This attitude has been the cornerstone of Adaptive's success and is an integral part of our corporate culture.

PRODUCTS – The combination of Adaptive's US based engineering team and state-of-the-art Malaysian manufacturing facility, insures our products are of the highest performance and quality at competitive prices. Our vertically integrated manufacturing systems assure consistent quality control through every step of the manufacturing process. We are the only USA LED manufacturer that builds its own LED displays for incorporation into our messaging products. We offer a broad line of indoor and outdoor products under the Alpha®, BetaBrite® and AlphaEclipse™ brands, along with a variety of software interfaces and turn-key applications. Adaptive is also a leading supplier of custom designed OEM products that are built to our customers' exact specifications. Most of the LED message displays you see everyday are Adaptive products that either carry our brand or are built into our partners' equipment and systems.

PARTNERSHIPS – Adaptive places a high value on the importance of strong business partnerships. Leveraging our support, manufacturing, and engineering strengths through value-added partners insures that the ultimate end user is satisfied for years to come. We pride ourselves in developing profitable win-win business relationships that last for decades.